

Superior vena cava (SVC)
Inferior vena cava (IVC)
Coronary sinus

Right atrium

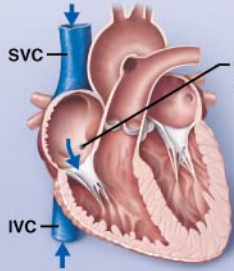
Tricuspid valve

Right ventricle

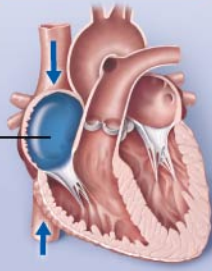
Pulmonary semilunar valve

Pulmonary trunk

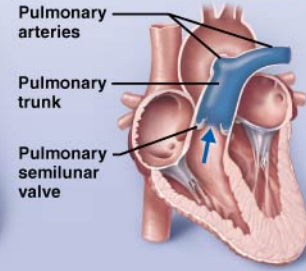
Blue box: Oxygen-poor blood
Red box: Oxygen-rich blood



Coronary sinus
Right atrium



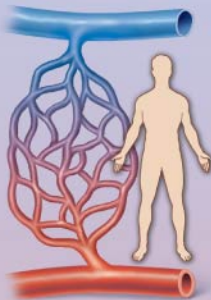
Tricuspid valve
Right ventricle



Pulmonary arteries
Pulmonary trunk
Pulmonary semilunar valve

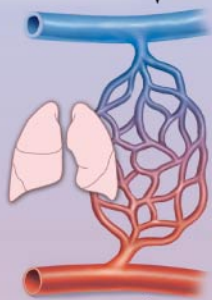
To heart
Oxygen-poor blood returns from the body tissues back to the heart.

To lungs
Oxygen-poor blood is carried in two pulmonary arteries to the lungs (pulmonary circuit) to be oxygenated.



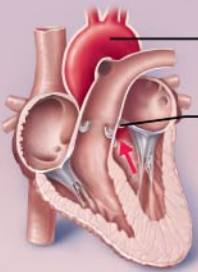
Systemic capillaries

To body
Oxygen-rich blood is delivered to the body tissues (systemic circuit).

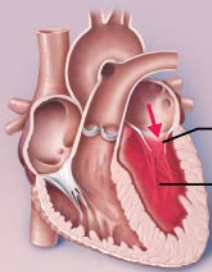


Pulmonary capillaries

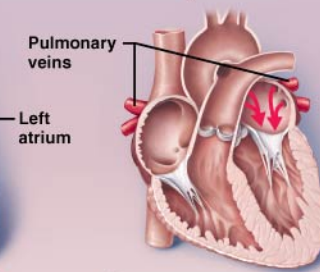
To heart
Oxygen-rich blood returns to the heart via the four pulmonary veins.



Aortic semilunar valve



Mitral valve
Left ventricle



Pulmonary veins
Left atrium

Aorta

Aortic semilunar valve

Left ventricle

Mitral valve

Left atrium

Four pulmonary veins